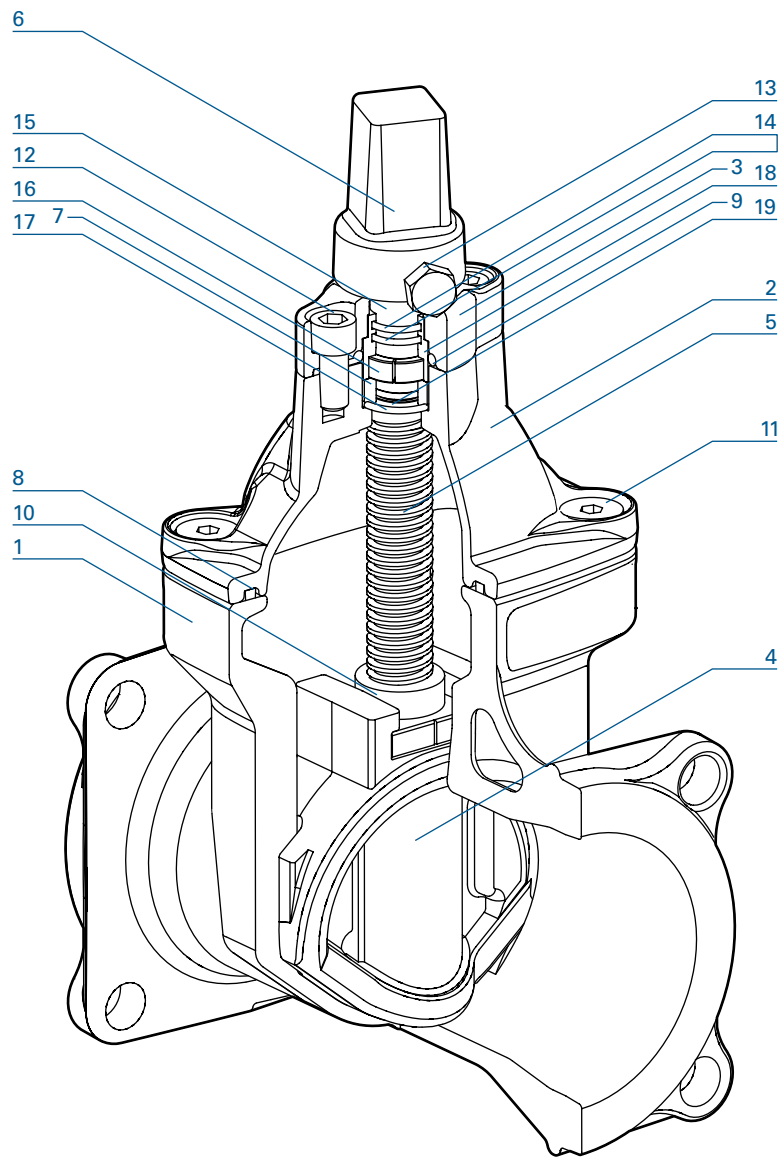




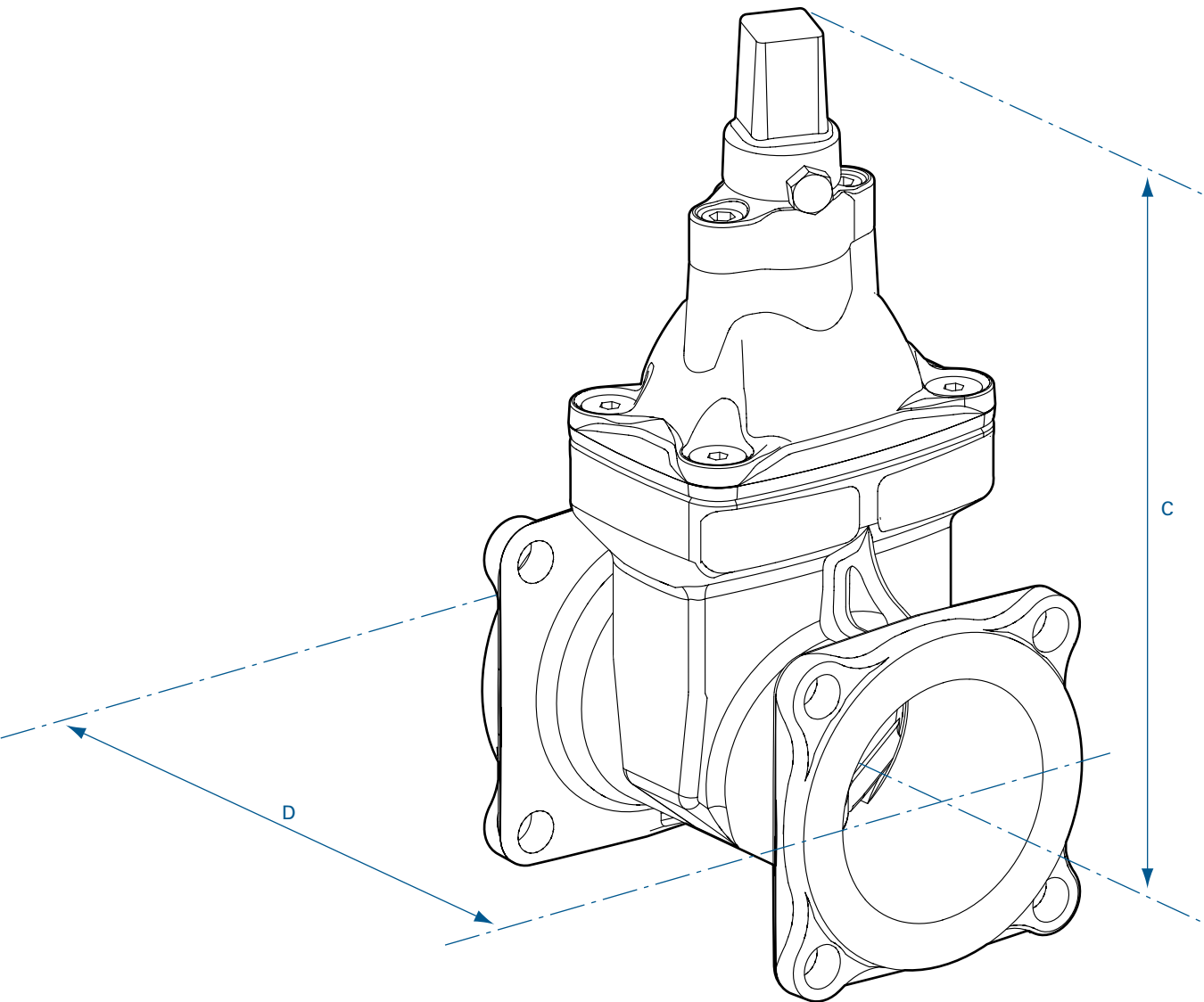
# Resilient Seated Gate Valves – AUSLITE DN 100 and DN 150



## Parts List

No	Description	Material	Standard
1	Body	Ductile Iron	AS 1831 400-15
2	Bonnet	Ductile Iron	AS 1831 400-15
3	Retaining Plate	Stainless Steel	ASTM A276 316
4	Wedge	Ductile Iron (EPDM Encapsulated)	AS 1831 400-15
5	Stem	Stainless Steel	ASTM A276 431
6	Stem Cap	Ductile Iron	AS 1831 400-15
7	Backseal Collar	Copper Alloy - Dezincification Resistant	AS 1567 C48600
8	Body Gasket	EPDM	AS 1646
9	Top Gasket	EPDM	AS 1646
10	Wedge Nut	Copper Alloy - Dezincification Resistant	AS 1567 C48600
11	Counter Sunk Screw	High Tensile Alloy Steel	-
12	Socket Head Cap Screw	High Tensile Alloy Steel	-
13	Hex Head Screw	Stainless Steel	ASTM A276 316
14	O-Ring	Nitrile Rubber	AS 1646
15	Wiper Ring	Nitrile Rubber	AS 1646
16	Collet Set	Copper Alloy - Dezincification Resistant	AS 1567 C48600
17	O-Ring	Nitrile Rubber	AS 1646
18	Seal Housing Bush	Copper Alloy - Dezincification Resistant	AS 1567 C48600
19	O-Ring	Nitrile Rubber	AS 1646

# Resilient Seated Gate Valves – AUSLITE DN 100 and DN 150



## Dimensions mm

Valve Size	C	D		Turns to Close	Torque to Seal Nm	Approx. Mass kg
		TYTON Socket Fig B5	Flange AS4087			
100	330	120	229	21	40	15
150	410	130	267	32	60	20

## End Connections



DN 100  
Socket



DN 100  
Flange



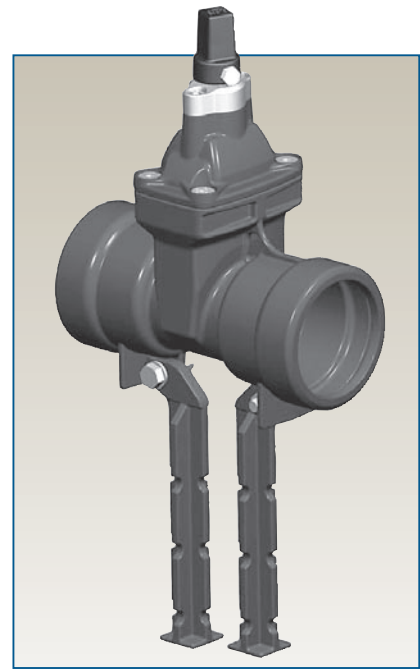
DN 150  
Flange

## Inside Screw Range – Class 16

DN	AUSLITE Key Operated			AUSLITE Handwheel Operated
	FL-FL	SC-SC	FL-SC	FL-FL
100	✓	✓	✓	✓
150	✓	✓	✓	✓
<b>Coating</b>				
Fusion Bonded Epoxy	✓	✓	✓	✓
<b>Options</b>				
Anticlockwise Closing	✓	✓	✓	
Clockwise Closing	✓	✓	✓	✓
Flange Drilling Fig B5 (TC)	✓		✓	✓

## Recommended Specification

- Gate valves shall be resilient seated conforming to AS 2638.2.
- The allowable operating pressure shall be 1600kPa.
- Operation shall be by means of a key/handwheel.
- The direction of closing shall be anticlockwise/clockwise.
- The valve body and bonnet shall be cast in Ductile Iron and coated with a thermally applied polymeric coating to AS/NZS 4158.
- The gate shall be cast in Ductile Iron and fully encapsulated in EPDM rubber – partially coated wedges are not acceptable.
- The spindle shall be Grade 431 Stainless Steel incorporating a failsafe thrust collar.
- The spindle seal retainer shall be manufactured from a dezincification resistant copper alloy to AS 1567.
- The spindle seal shall be affected by a minimum of two O-rings, which can be replaced under full operating pressure.
- Fasteners shall be completely isolated from the external environment.
- Valves shall be manufactured under a product certification scheme and each valve marked in accordance with the certification body's requirements.



## Anchor Legs

AUSLITE Valves can be fitted with anchor legs that allow the valve to be secured to a thrust block cast in place under the valve. Simply

- 1 Attach the anchor castings onto the body using the stainless steel fasteners provided.
- 2 Excavate an appropriate cross trench thrust block pit, adjusting the width to suit ground conditions.
- 3 Install the valve into the pipeline.
- 4 Pour concrete thrust block and allow to set.

Anchor legs are very easy to attach, simplify formwork and make thrust blocking AUSLITE Valves a breeze.