

WANG Clamps

INSTALLATION GUIDE

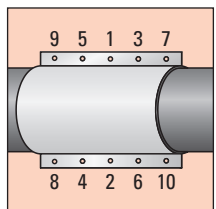
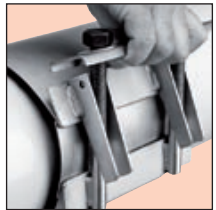
Generic Instructions. To be read in conjunction with Type Specific Instructions overleaf.
Please read ALL information on both sides of this guide prior to installation.

Recommended Equipment

- Tension Wrench (0-150Nm) & 24mm long thread socket
- Pipe surface cleaning equipment
- Clamp & Pipe Lubricant (supplied) or other lubricant approved for use with potable water

Initial Preparation Clean the pipe surface, making it as clean and free of soil, mud and scale as possible in order to enable the clamp gasket to successfully seal against the pipe surface

- 1** Hold the clamp against the pipe and draw left and right clamp end locator marks on the pipe
- 2** Loosen the nuts to the end of the studs but DO NOT remove nuts or the locking plate. Spread open the clamp but do not flatten or crease the metal band(s)
- 3** Use the supplied pipe lubricant sachet or an approved pipe joining lubricant to lubricate the clamp gasket and pipe surface
- 4** Wrap the clamp around the pipe surface, ensuring that the gaskets and studs remain as clean and free of soil and mud as possible
- 5** Assemble the clamp around the pipe by bringing the locking plate over the alignment lugs and hand tightening the nuts to hold it in place (see adjacent diagram). Check that the edges of the clamp are within the locator marks (Step 1) and that the gasket mat is wrapped smoothly around the pipe without any twists or ripples
- 6** Once satisfied with the location of the clamp on the pipe, use a tension wrench to sequentially tighten the studs (see adjacent diag) to the recommended tension specified on the clamp. **ALWAYS RETENSION STUDS after 20 to 30 minutes** in order to compensate for loss in initial tension due to rubber gasket relaxation. Finally replace the blue thread protectors



tyco
Water

Tyco Water – WANG Components
ABN 75 087 415 745
Cnr. Gibson & Sandford Road,
Wangaratta, Victoria 3677, Australia
Phone (61) 03 5722 7400

WANG Clamps

INSTALLATION GUIDE

Type Specific Instructions. To be read in conjunction with Generic Instructions overleaf.

Clamp	Step	Type Specific Installation Information
KWIK Clamps	4	First slide the cartridge gasket out of the clamp and open it at the split running along its length. Then comply with Step 5 below
	5	Disengage the bolt head from the lug and install the clamp assembly around the cartridge gasket before tightening. Then comply with Step 6 – Generic Instructions
Repair Clamps	–	Follow Generic Instructions
Tapped Repair Clamps	6A	If the pipe offtake opening is to be pre-tapped, ensure that the clamp's tapping offtake sits concentric to the pipe opening. Then comply with Step 6 – Generic Instructions
Tapping Saddles	6A	If the pipe offtake opening is to be pre-tapped, ensure that the size of the tapped opening permits the gasket 'Sealing Ring' to be firmly in contact with the pipe surface. Then comply with Step 6 – Generic Instructions
Flanged Offtake Clamps	6A	Limit the rotation of the clamp on the pipe to a minimum so as to avoid dislodging the gasket 'Sealing Ring' around the offtake. Then comply with Step 6 – Generic Instructions
Sewer OB Junction Clamps	6A	Ensure that the lip of the offtake sits within the pipe opening and not against the pipe surface. Then comply with Step 6 – Generic Instructions

IMPORTANT – PLEASE READ PRIOR TO INSTALLATION

- WANG Clamps DO NOT provide axial pipe restraint. Therefore if used above ground or in a non back-filled trench, ensure that BOTH the clamp and pipe are axially restrained by external means
- Repair Clamps are NOT intended to be used as pipe joiners or where circumferential crack separation has occurred. The product cannot be guaranteed in such applications
- Prior to use of any WANG clamp on 'O'PVC or HDPE pipe, please contact WANG Components in order to assess the suitability of product application and for any special installation instructions
- Nitrile rubber gaskets are only recommended for use in temperatures ranging from 0° to 60°C
- Corrosive environments, eg soils with a Chloride content in excess of 1000ppm, can have a detrimental effect on Stainless Steel. Where product is intended for use in such environments, additional advice should be sought from WANG Components prior to installation. It is recommended that periodic assessment and maintenance of the clamp be undertaken in such environments